

# INTRODUCTION TO THE HNU NEU-ULM UNIVERSITY OF APPLIED SCIENCES



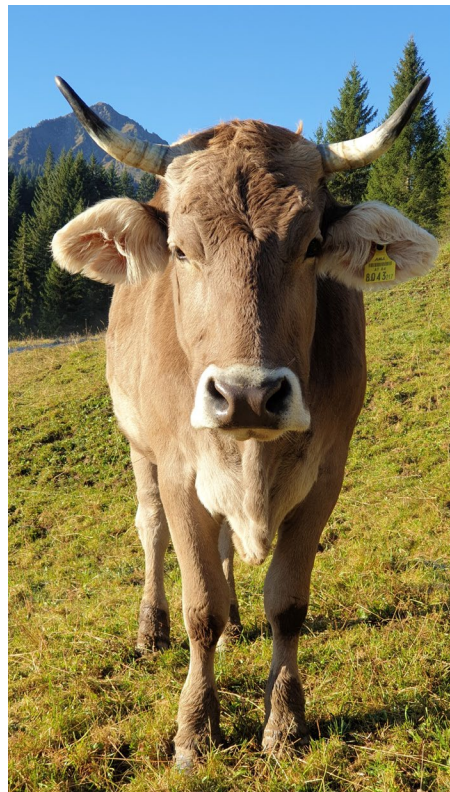
INTERNATIONAL OFFICE

**WHERE IN  
GERMANY ARE WE  
LOCATED?**



## OUR REGION: BAVARIA

### THE ALPS DURING SUMMERTIME





# BAVARIA

## THE ALPS DURING WINTERTIME





## BAVARIA

### CASTLE NEUSCHWANSTEIN AND CAPITAL MUNICH



## NEU-ULM AND ULM

### TWO CITIES AND A VERY SPECIAL LOCATION



- ... combined population of 200,000, of which 10% are students
- ... located in two different federal states: Bavaria (Neu-Ulm) and Baden-Württemberg (Ulm), separated and united by the river Danube (Donau)



# NEU-ULM AND ULM

## ULM CITY HALL



# NEU-ULM AND ULM

## ULM MINSTER WITH MOUNTAIN VIEW





# NEU-ULM AND ULM

## NABADA (TRADITIONAL PARADE ON THE DANUBE)



## ABOUT THE HNU

HOCHSCHULE NEU-ULM | NEU-ULM UNIVERSITY OF APPLIED SCIENCES





## WE ARE PART OF A STRONG ECONOMIC REGION

- attractive mix of global players, hidden champions and small and medium-sized companies in engineering, logistics, automobile and components industry, IT and pharmaceutical industry, healthcare
- low levels of unemployment
- excellent quality of life

GE Healthcare



**DACHSER**  
Intelligent Logistics



**AIRBUS**  
DEFENCE & SPACE



**Husqvarna**

**NOKIA**

**FRUCHTHOF NAGEL**  
KARANKEL PERI LOGISTIK KUCHENFOLI

**DB SCHENKER**

**TAKATA**

**VOITH**

**RECORDATI PHARMA**

**LIEBHERR**

**Wieland**



**Uhlmann**

**SEEBERGER**

**Daimler TSS**

**BMW Car IT GmbH**

**WICONA**

**HENSOLDT**  
Dietrich and Procter

**-weishaupt-**

**Boehringer Ingelheim**

**beurer**  
Gesundheit und Wohlbefinden

**ingenics**



**NOERPEL**  
GEMEINSAM VORAN.

**DIEHL**

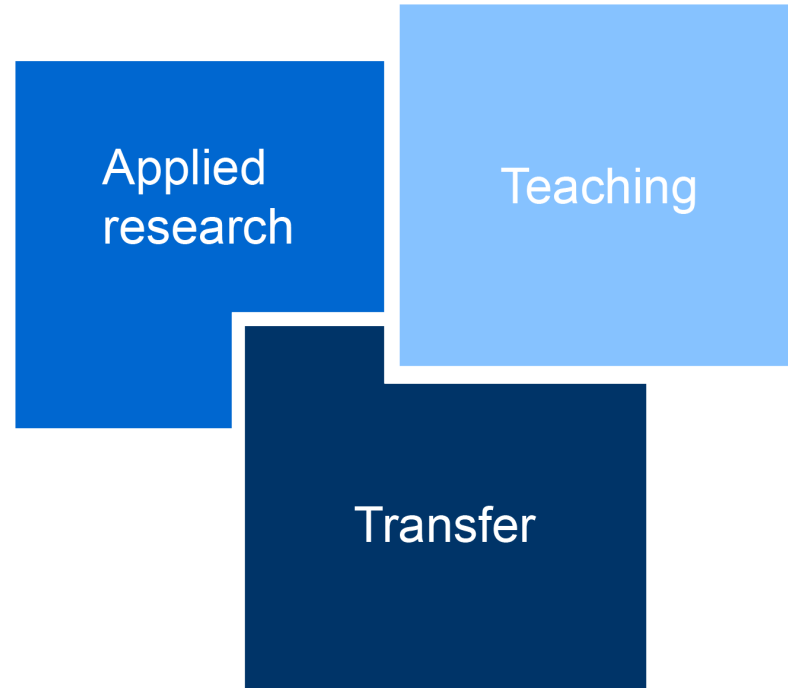
**SCHWENK**  
Baustoff leben

**ratiopharm**  
Gute Preise. Gute Besserung.



## WE CONNECT THEORY TO PRACTICE

- Integration of teaching, applied research and transfer
- Teaching staff with relevant work experience
- Intensive cooperation between science, industry and society
- Active innovation driver in the region and beyond





## OUR DEPARTMENTS

THE HNU STANDS FOR WORK-RELATED EDUCATION, APPLIED RESEARCH  
AND ACTIVE TRANSFER



Business and Economics



Information Management



Health Management



Centre for  
Postgraduate Studies

## OUR STUDY PROGRAMMES

### BACHELOR

Business Studies  
Industrial Engineering  
Business Psychology  
Business Criminology

Artificial Intelligence and Information Management  
Business Information Systems  
Data Science Management  
Digital Enterprise Management  
Game Production and Management  
Information Management Automotive  
Information Management and Corporate Communications

Business Studies in Healthcare Management  
Digital Management in Medicine and Care  
Information Management in Healthcare  
Physician Assistant

### MASTER

Advanced Management  
Advanced Sales Management and Intelligence  
Social Entrepreneurship for Sustainable Development

Artificial Intelligence and Data Analytics  
Communication and Design for Sustainability  
Digital Innovation Management  
Digital Transformation and Global Entrepreneurship  
International Corporate Communication and Media Management  
International Entrepreneurship, Digitalization and Sustainability  
Strategic Information Management

Digital Healthcare Management



## WE OFFER ROOM FOR INNOVATION ...

in teaching, research and transfer

- Innovation Space
- Founders Space
- Design Thinking Lab
- Digital Operations Lab
- Healthcare Lab
- Tech Lab
- Logistics Lab
- Media Lab
- UX Testing & Usability Lab



## WE OFFER ...

a modern and green campus

- situated in the park of the former state horticultural show
- with numerous sports and leisure activities
- canteen with a lake terrace
- excellent access to the public transport network



## FACTS & FIGURES

### 3 Academic Departments

- Business and Economics
- Information Management
- Health Management

15 Bachelor's programmes

11 Master's programmes

4,200 students

90 professors

220 staff in teaching, research, transfer  
and administration





## WE ARE AN INTERNATIONAL BUSINESS SCHOOL

- 110+ international partner universities worldwide
- International study programmes such as International Master Degrees, Double Degrees, Study & Work International
- International projects in teaching, research and transfer
- International programmes for teaching and administrative staff
- 100+ courses taught in English
- 150+ incoming exchange students per year
- 300+ outgoing students per year
- 400+ international degree-seeking students



## OUR INTERNATIONAL PARTNERS

90+ PARTNER UNIVERSITIES FOR STUDENT EXCHANGE, 110+ PARTNERS IN TOTAL



## SERVICES FOR INCOMING EXCHANGE STUDENTS

- Support with housing  
(in local student residences, private rooms or shared flats)
- Support with formalities  
(residence permit, bank account, health insurance, etc.)
- Student buddies make the start easier
- Orientation programme
- German language classes
- Social activities and excursions





## ORIENTATION PROGRAMME FOR EXCHANGE STUDENTS

### FIRST WEEK

<b>Monday, 23 September</b> 9 am – 12:30 pm	<b>Welcome Session &amp; HNU Tour (with International Office and Buddies)</b> <i>Meeting point: Cafeteria Building B &amp; Room B.0.14</i> <i>You will need: just yourself and good mood ☺</i>
<b>2 – 5:15 pm</b>	<b>Kick Off German Intensiv Course A 1.1 (until 04 October)</b> <i>Meeting point: B.2.37</i>
<b>Tuesday, 24 September</b> 9 am – 12 noon	<b>Studying at the HNU &amp; Timetable Session</b> <i>Meeting point: Room B.1.32</i> <i>You will need: Login details for your HNU account and cash for the Ticket Sale</i>
<b>Wednesday, 25 September</b> Group A: 9 am Group B: 1 pm	<b>Library Tour</b> <i>Meeting point: In front of the library, Building A - Please be on time ☺</i>
<b>10 am – 12 noon</b>	<b>Formality Session</b> <i>Meeting point: Room B.0.14</i> <i>You will need: passport or ID, your bank card, your rental contract</i>
<b>6 pm</b>	<b>Ulm City Tour</b> <i>Meeting point: In front of the Ulmer Münster</i>
<b>8 pm</b>	<b>Barfüßer Ulm</b> <i>Enjoy some typical German food and drinks and meet up with your buddies</i>
<b>Thursday, 26 September</b> 5:30 pm	<b>HNU anniversary celebration</b> <i>Special Invitation from the HNU President, Prof. Dr. Uta Feser</i> <i>Meeting point: Foyer (Building A)</i>
<b>Saturday, 28 September</b>	<b>Excursion München and BMW museum (Buddies)</b> <i>Meeting points:</i> <i>8:15 am: HNU Campus OR 9 am: Ulm train station</i> <i>Registration at the Ticket Sale is mandatory for participation!</i>

### SECOND WEEK

<b>Monday, 30 September</b> 10 – 11:30 am 11:30 am 12:30 pm	<b>Initiative Market</b> <b>Welcome Speech by Prof. Dr. Kormann, VP of the HNU</b> <b>„Weißwurst Frühstück“ (Bavarian white sausage) at the canteen (Mensa)</b> <i>Meeting point: Foyer (Building A)</i> <i>Learn about your opportunities at the HNU and enjoy a traditional Bavarian breakfast!</i>
<b>2:30 pm</b>	<b>HNU City Rallye (STUVER) – no German course!</b> <i>Meeting point: Foyer (Building A)</i> <i>Registration is mandatory at <a href="mailto:stuver@hnu.de">stuver@hnu.de</a></i>
<b>Wednesday, 02 October</b> 7 pm	<b>Beer Pong Tournament (STUVER)</b> <i>Meeting point: TBA</i> <i>Registration is mandatory at <a href="mailto:stuver@hnu.de">stuver@hnu.de</a></i>
<b>Thursday, 03 October</b> 5 pm	<b>Picknick at the Danube (Buddies)</b> <i>Meeting point: main entrance of the HNU</i> <i>Registration is mandatory at <a href="mailto:stuver@hnu.de">stuver@hnu.de</a></i>
<b>Friday, 04 October</b> 5 pm	<b>Pub Crawl and Clubbing (STUVER)</b> <i>Meeting point: TBA</i> <i>Please note: Registration is mandatory <a href="mailto:stuver@hnu.de">stuver@hnu.de</a></i>
<b>Saturday, 05 October</b>	<b>Excursion to Stuttgart and Pumpkin Fair Ludwigsburg (Buddies)</b> <i>Meeting points:</i> <i>8:15 am: HNU Campus OR 9 am: Ulm train station</i> <i>Registration at the Ticket Sale is mandatory for participation</i>
<b>Monday, 07 October</b>	<b>Start of Lectures</b> <i>Please inform your lecturers and fellow students, if you miss a class.</i> <i>You can no longer unsubscribe from courses after the 2nd week of lectures.</i>
<b>Wednesday, 27 November</b>	<b>International Fair</b> <i>Share information about your home country and home university with future outgoing students and staff.</i> <i>Learn about other countries and try their specialities!</i>

## ACADEMIC OFFER FOR EXCHANGE STUDENTS

- 100+ courses taught in English
  - Department of Business and Economics
  - Department of Information Management
  - Department of Health Management
- Multidisciplinary courses
- German language courses
- German taught courses
- overview at [www.hnu.de/en/coursesinenglish](http://www.hnu.de/en/coursesinenglish)



## INCOMING STUDENT EXCHANGE: COSTS, SEMESTER TIMES AND DEADLINES

### COSTS

- No tuition fees
- Administration fee of about 75 euros per semester
- Rent: 400-600 euros
- Food and transportation: about 350 euros
- German health insurance: about 120 euros

=> about 1.000 euros / month

### SEMESTER TIMES

**Winter term:**  
mid of September until  
mid of February

**Summer term:**  
beginning of March until  
end of July

### DEADLINES

**Winter term:**  
Application: 1 May  
(nomination: 15 April)

**Summer term:**  
Application: 15 November  
(nomination: 1 November)



## FURTHER INFORMATION

- [Video Clip](#) „Join the HNU!“
- [Website](#) for international exchange students
- [Website](#) „Why the HNU?“
- [Fact Sheet](#) for student exchange
- [Overview](#) of courses taught in English
- [Website](#) for partners and guests
- [YouTube](#) playlist „International“: HochschuleNeuUlm
- [Instagram](#) profile of the HNU: @hochschule\_neu\_ulm
- [Facebook](#) profile of the HNU: Hochschule Neu-Ulm

## TEAM OF THE INTERNATIONAL OFFICE



Veronika Katharina

Mirjam

Katja

Verena

Anna

Karin

Alexandra

The logo of Hochschule Neu-Ulm, consisting of the letters 'HNU' in a stylized, white, sans-serif font. The background of the entire image is a photograph of the university's modern architecture, featuring a large building with a blue and white facade, situated behind a body of water. The sun is low on the horizon, creating a warm, golden glow and reflecting off the water and the building's windows. Bare trees are visible in the foreground and middle ground.

# HNU

Hochschule Neu-Ulm  
University of Applied Sciences

# SEE YOU AT THE HNU!

**Hochschule Neu-Ulm  
Neu-Ulm University of  
Applied Sciences**

**International Office**  
Wileystrasse 1  
89231 Neu-Ulm  
Germany

Phone +49 (0) 731-9762-2121  
eMail [international@hnu.de](mailto:international@hnu.de)

[www.hnu.de/en/international](http://www.hnu.de/en/international)

